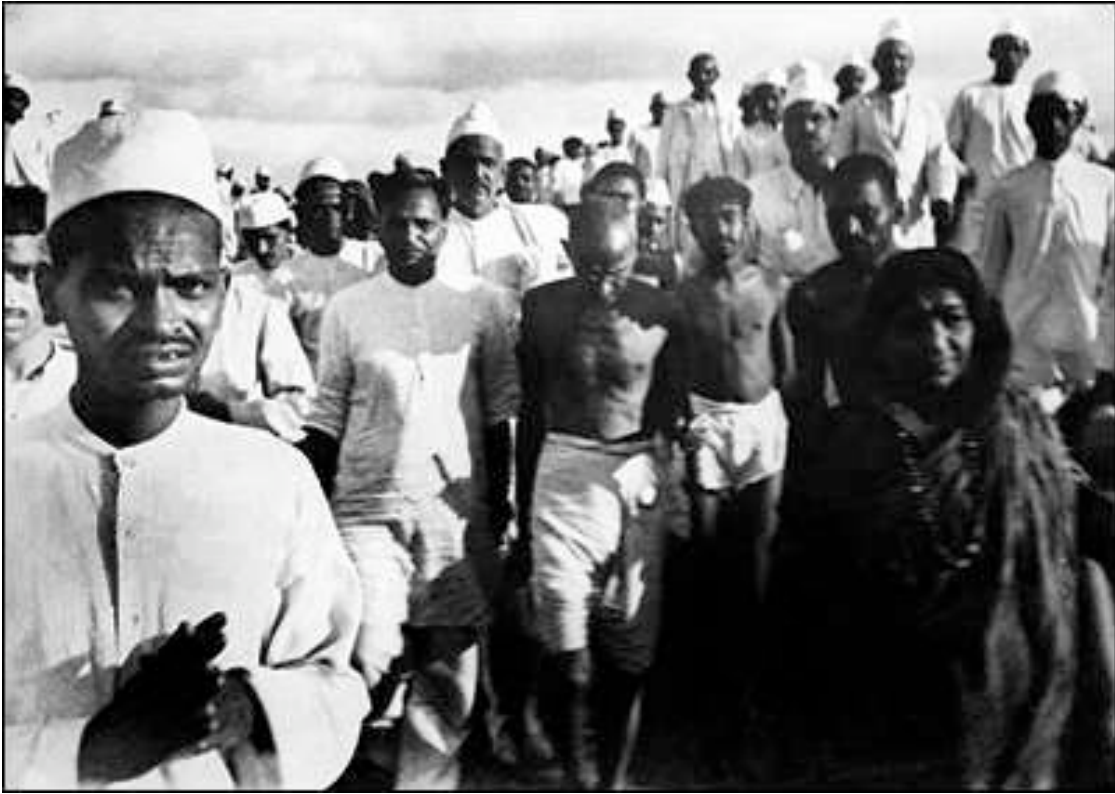


**Photograph 1: Women at Salt march, April 1930**



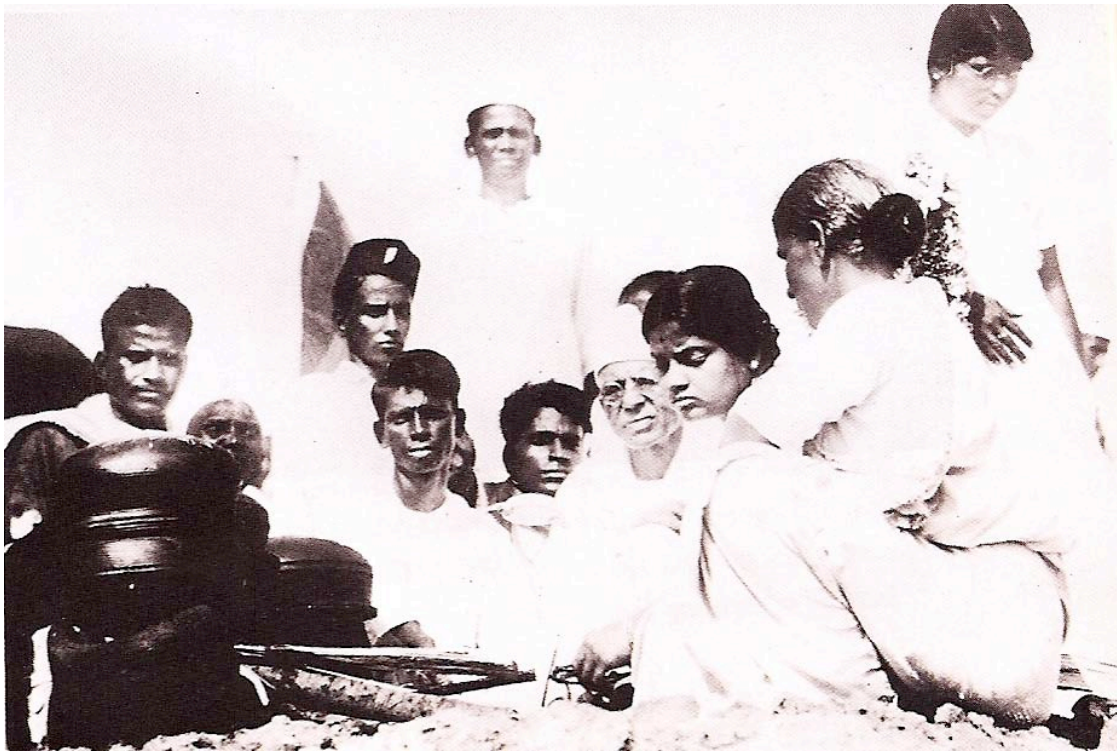
([http://commons.wikimedia.org/wiki/Image:Salt\\_March\\_meal\\_preparation.jpg](http://commons.wikimedia.org/wiki/Image:Salt_March_meal_preparation.jpg))

**Photograph 2: Sarojani Naidu (lower right) accompanying Gandhi on Salt March, March-April, 1930**



([http://commons.wikimedia.org/wiki/Image:Gandhi\\_Salt\\_March.jpg](http://commons.wikimedia.org/wiki/Image:Gandhi_Salt_March.jpg))

**Photograph 3: Manufacturing contraband salt at the beach in Madras**



(Anil Dharker. *The Romance of Salt*. New Delhi Lotus Collection Roli Books. 2005. Insert)

**Photograph 4: Gandhi at Dandi, South Gujarat, picking salt on the beach at the end of the Salt March, 5 April 1930**



([http://en.wikipedia.org/wiki/Image:Salt\\_March.jpg](http://en.wikipedia.org/wiki/Image:Salt_March.jpg))

**Photograph 5: Mahatma Gandhi and Sarojini Naidu (lower right) on Salt March, 1930**



([http://en.wikipedia.org/wiki/Image:Mahatma\\_%26\\_Sarojini\\_Naidu\\_1930.JPG](http://en.wikipedia.org/wiki/Image:Mahatma_%26_Sarojini_Naidu_1930.JPG))

**Photograph 6: Women bringing brine to salt pans in Vile Parle Camp, Bombay during the civil disobedience movement, 1930**



(Geraldine Forbes. *Women in Modern India*. Cambridge: Cambridge University Press. 1996. Pg. 133)

## Photograph Analysis Worksheet

### A. Observation

Study the photograph for 2 minutes. Form an overall impression of the image and then examine individual items in the image. Divide the image into four sections and study each to see what new details become visible. Use the chart below to write down your observations. List people, objects and activities in the image.

**PEOPLE**

**OBJECTS**

**ACTIVITIES**

### B. Deductions

Based on your observations above, list three things you might deduce from this image.

- 1.
- 2.
- 3.

### C. Questions

What questions does this images raise in your mind? List two.

- 1.
- 2.

How might you go about finding answers to your questions?